

# A new Kenya Calendar for 2008

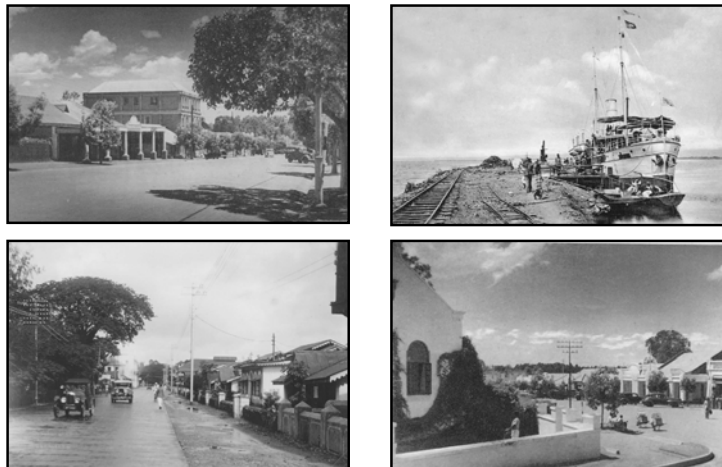
A new **A4** calendar is now available for 2008 entitled '**KENYA in Old Postcards**'. Published by Kevin Patience who produced the two previous calendars **Kenya Churches** in 2003 and **Kenya - Then and Now** in 2005. The idea for this one came about during research for postcards of the East African railway system.

The twenty-five captioned views cover the country from the coast to Lake Victoria using contemporary cards dating from the early 1900s to the 1950s, featuring scenes of Lamu, Takaungu, Mombasa, Kilindini harbour, Nyali Bridge, Nairobi, Naivasha, Nakuru, Eldoret, Kitale and Kisumu with some interesting views of the Mombasa and Nairobi Clubs and the Norfolk and Stanley hotels in the early days.

For those with an interest in the country's transport there are illustrations of a 'B' Class locomotive and the S.S. Winifred on Lake Victoria. There are two views per page with captions and post card publishing details and lines to write your itinerary.



These postcards are part of the large collection formed by the late Clive Evans and sincere thanks are due to Mabs Evans for permission to use them to illustrate a part of Kenya's rich history. A proportion of the proceeds will be donated to his charity.



The cost including post and packing in the UK is £6.50. and £7.50 for overseas destinations, with discount on two or more on overseas orders.

Available from : **Kevin Patience - 257 Sandbanks Road, Poole, BH14 8EY**  
**Tel. 01 202 707450 - email : saburi@hotmail.com**

The new publication by Kevin Patience '**Shipwrecks and Salvage on the East African Coast**' is also available.